



UNITOP

Model 2011



ISO Climatic Class 4

UNITOP is the prep table by Unifrigor, simple, sturdy and reliable but also flexible, because it is available in various versions:

- chillers (TPV) +2/+8°C
- freezers (TNV) -15/-25°C
- with left hand incorporated condensing unit
- with right hand incorporated condensing unit
- without condensing unit and thermostatic valve



- the monocoque body grant an excellent cold maintenance and it is available in various versions:
 - without working top
 - with simple working top
 - with working top and splash back

- you can replace the door with a set of 2 drawers
- you can replace the door with a set of 3 drawers



The new cover motor sheet with side opening similar to one door but with light narrow hinges and magnet locking, make easier to access the motor unit area and especially to the condenser, to facilitate regular cleaning operations. Moreover the thermostat and the pushbuttons, are fixed in the upper part of the motor unit area, a safe area without humidity, in order to preserve their functionally and their duration in time.

Standard supply :

1 chromium plated shelf + 1 couple of guides for each door (either GN models or BKN models).

As all our production also this line uses CFC free gas.

Electronic Thermostat / Thermometer



The working top is reinforced with wood.

Revolving wheels (2 with brake) are available as option.



The door is provided with magnetic basket on all sides and also with self closing hinge braked at 90° in order to make easier loading and unloading the cabinet, granting the maximum comfort and maximum cold maintenance.



Shelves supports and clutching racks are completely removable to make easier cleaning operations inside the tank granting the maximum of hygiene in compliance with HACCP regulations.



The evaporator is located in the internal tank (behind the column) and it has a painting protection in compliance with the regulations in force.

The evaporator is also equipped with a tank for defrosting water collection and two fans to grant a total uniformity of cold inside the tank.

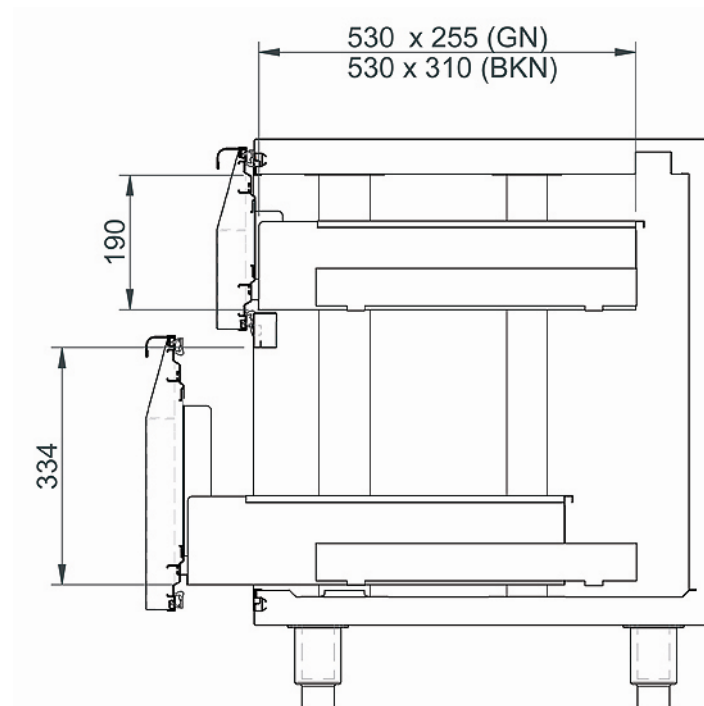
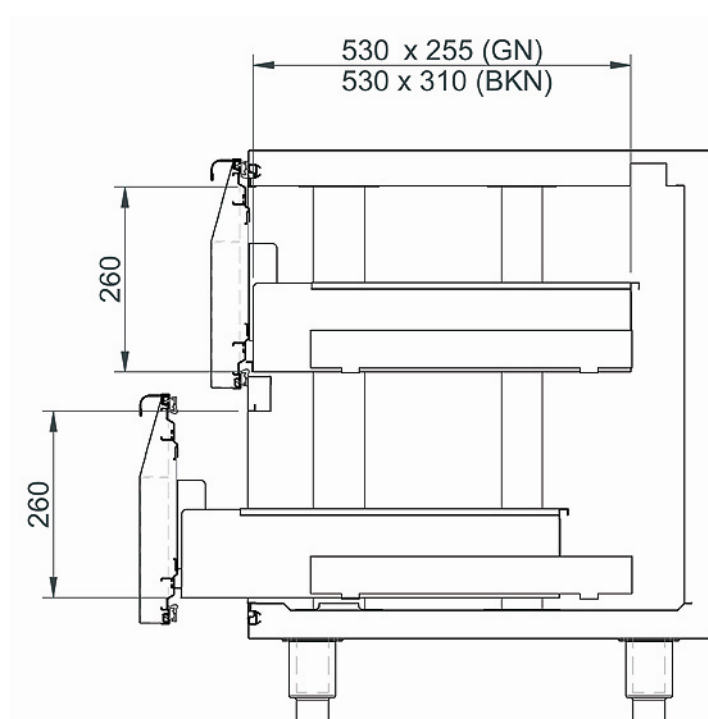
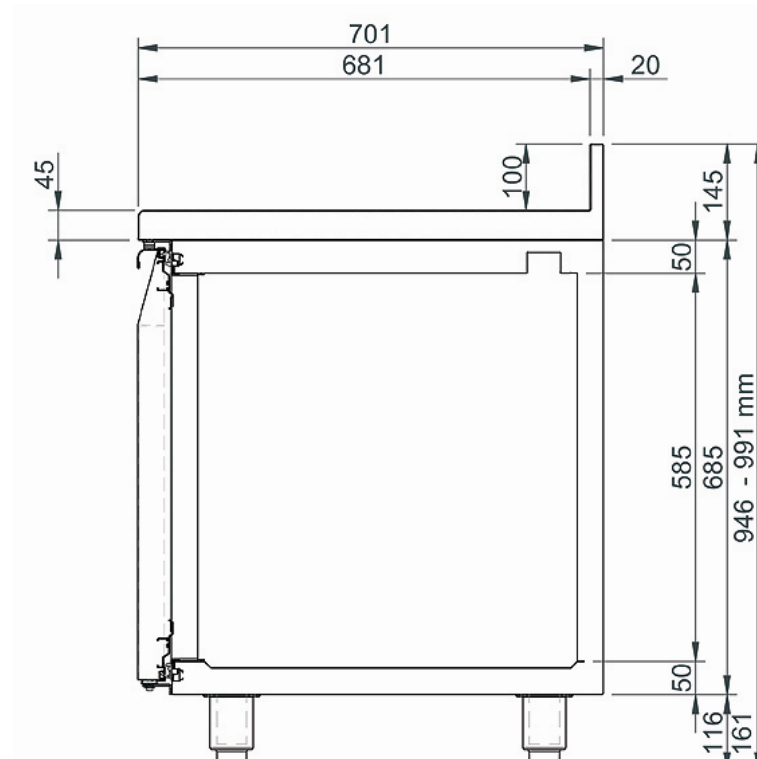
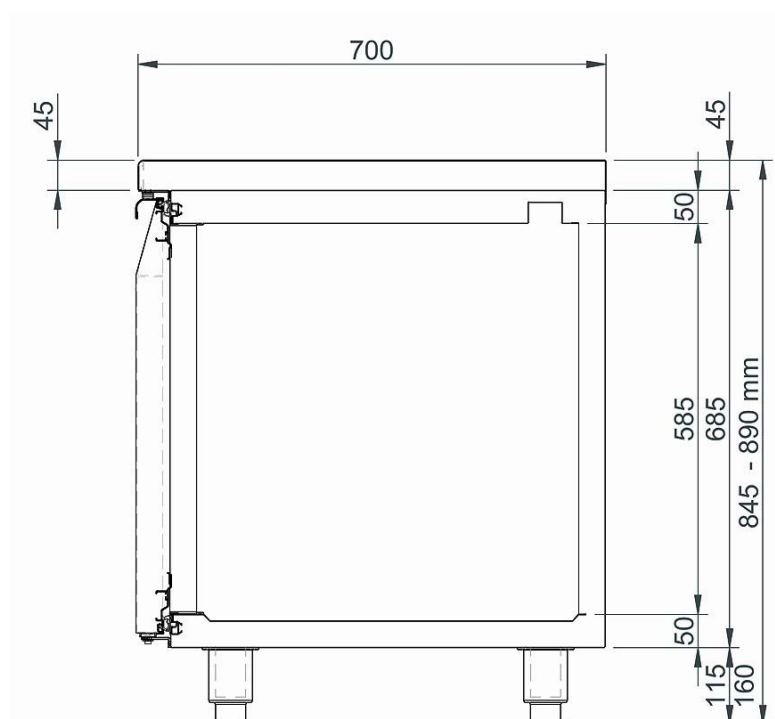
The depth of all models is 700 mm and the height is:

- without top 800/845 mm
 - with simple top 845/890 mm
 - with top + splash back 945/990 mm
- the tikness of the top is 45 mm
- the height of the splash back is 100 mm



Available models:

N. door	model	lenght	model	lenght	volume
2 doors	TPV 2DM GN	1290 mm	TPV/SG 2DM	1070 mm	280 litres
3 doors	TPV 3DM GN	1775 mm	TPV/SG 3DM	1555 mm	456 litres
4 doors	TPV 4DM GN	2260 mm	TPV/SG 4DM	2040 mm	631 litres
2 doors	TPV 2DMX BKN	1428 mm	TPV/SG 2DMX BKN	1208 mm	330 litres
3 doors	TPV 3DMX BKN	1992 mm	TPV/SG 3DMX BKN	1772 mm	535 litres
4 doors	TPV 4DMX BKN	2556 mm	TPV/SG 4DMX BKN	2336 mm	740 litres
2 doors	TNV 2D GN	1260 mm	TNV/SG 2D	1040 mm	300 litres
3 doors	TNV 3D GN	1720 mm	TNV/SG 3D	1500 mm	460 litres
4 doors	TNV 4D GN	2180 mm	TNV/SG 4D	1960 mm	630 litres



Drawers internal usable dimensions:

two drawers 1/2 + 1/2 GN
300 (L) × 550 (P) × 215 (H) mm

two drawers 1/2 + 1/2 BKN
360 (L) × 550 (P) × 215 (H) mm

two drawers 1/3 + 2/3 GN
lower drawer 300 (L) × 550 (P) × 320 (H) mm
upper drawer 300 (L) × 550 (P) × 100 (H) mm

three drawers 1/3 + 1/3 + 1/3 GN
300 (L) × 550 (P) × 100 (H) mm

three drawers 1/3 + 1/3 + 1/3 BKN
360 (L) × 550 (P) × 100 (H) mm

